

RICMOTECTM

HIGH PERFORMANCE
SIM-RACING EQUIPMENT

Installation of Aftermarket Wheel Adapter for Logitech G25 and G27 Wheel bases

This guide will take you step by step through the installation of your new wheel adapter.

CAUTION: Be careful to avoid static build-up while handling the electronics in your wheel.

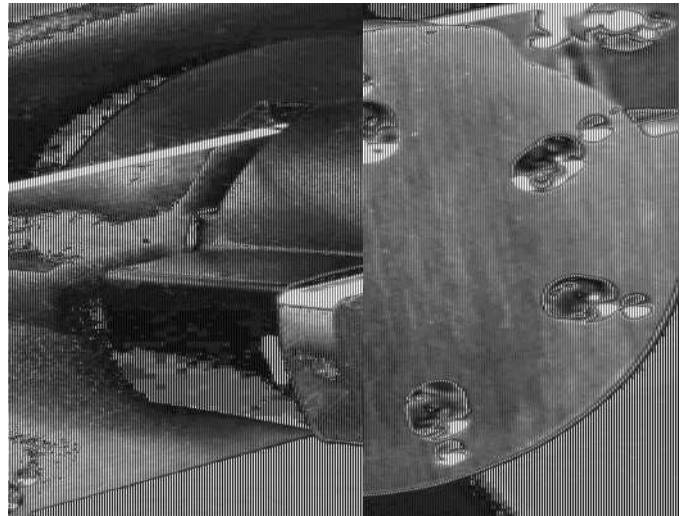
Do not use a powered screwdriver during the installation. It is important to proceed slowly when threading screws into plastic to avoid damaging the plastic. Always try to thread the screws into the same grooves made by the factory.



Remove these 6 screws from the original wheel using a 5mm hex key.



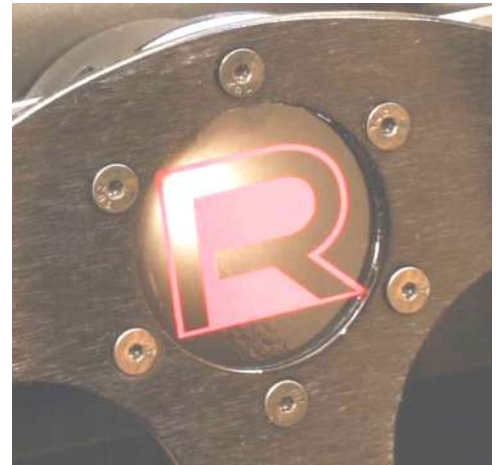
Remove the LED lens piece and unplug the wire harness that go to the wheel buttons.



Install the adapter as shown above using the 6 "Plastite" screws supplied. Tighten in a cross pattern.

Place the decal on the adapter to conceal the screws.

Locate the 6 screw holes and punch holes in the decal to access them. Install your new wheel onto the adapter with the screws provided.



Notice: Ricmotech is not responsible for any damage you may cause to your Logitech® wheel during the installation of the wheel adapter. Installation of this adapter may void the original manufacturer's warranty.

Need Help?

If you run into any problems during the installation of the paddles, please contact us directly at technical support at (305) 417-9241 or via email at mail@ricmotech.com.

Due to constant improvements to our products, the product you receive may vary slightly from the product shown in the illustrations.

Copyright 2015, Ricmotech LLC

Logitech® and G27 are trademarks of the Logitech® companies and the terms are used for reference purposes only. Ricmotech LLC is not affiliated with the Logitech® companies.