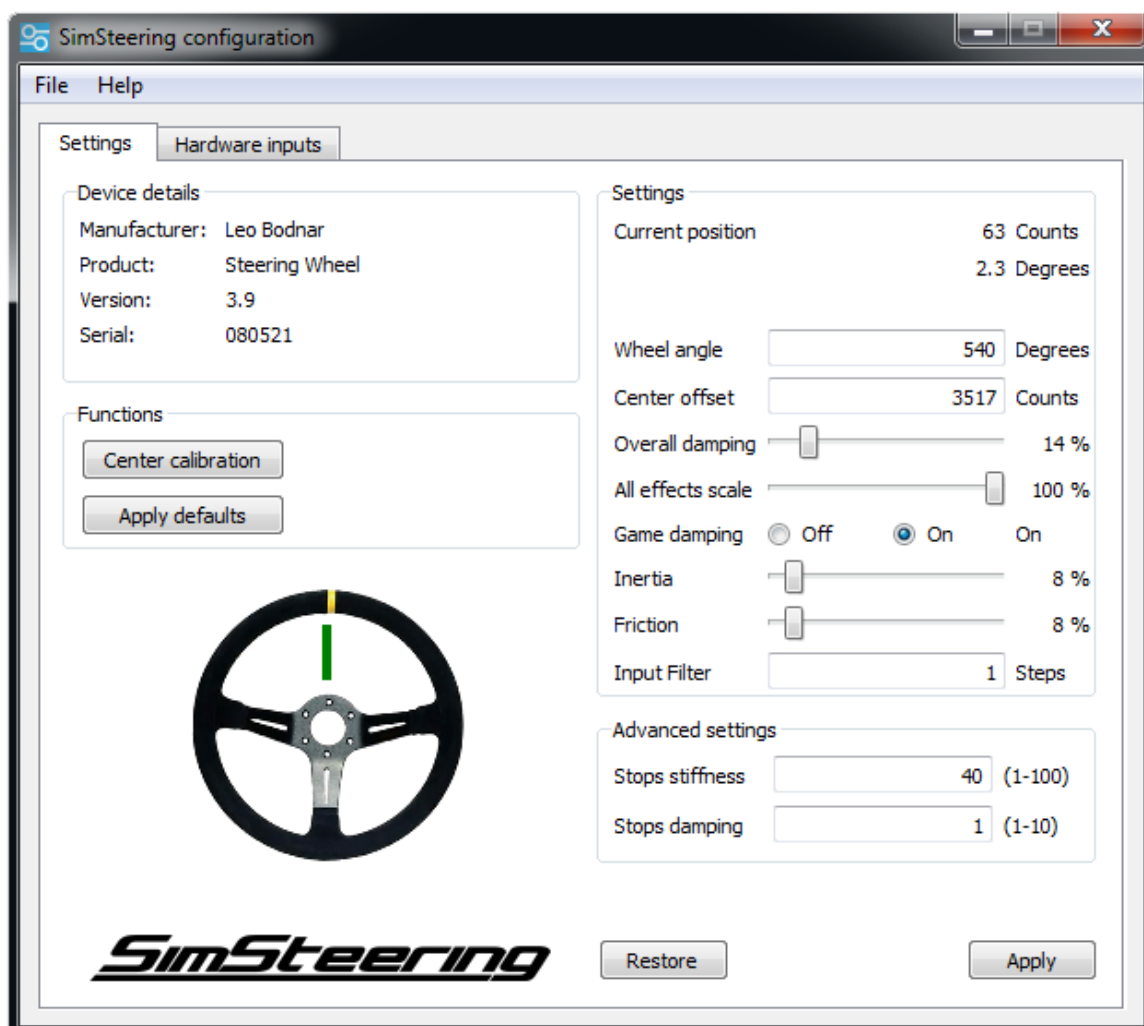


SimSteering 2 settings for iRacing.

These are recommended starting settings.

In the App.ini file.

steeringForceParkedPct=0.100000 ; Reduce FFB force by percent when parked, to help reduce oscillations



Wheel configuration X

Device details

Manufacturer	Leo Bodnar
Product	Steering Wheel
Version	3.9
Serial Number	080521

Current position	63	counts
	2.3	degrees
Centre offset	<input type="text" value="3517"/>	counts

Overall damping	<input type="text" value="21"/>	
Overall inertia	<input type="text" value="20"/>	
Overall friction	<input type="text" value="20"/>	
Stops (each side)	<input type="text" value="7501"/>	counts
Stops stiffness	<input type="text" value="40"/>	
Stops damping	<input type="text" value="1"/>	
Centering spring	<input type="text" value="3"/>	

Motor filter	<input type="text" value="1"/>
Input filter	<input type="text" value="1"/>

All Effects scale	<input type="text" value="100"/>	%
Damper Effect scale	<input type="text" value="100"/>	%

OPTIONS
✕

STEERING

Wheel range: 592°

Map range: 592°

BRAKES

Force factor: 0.00

FORCE FEEDBACK

Enable Force Feedback auto reset

Use linear mode Dampen oscillations

Strength: 8.2

Damping: 0%

Min force: 0.0%

GEARBOX

Sequential

H-Pattern / Direct Selection

TOUCH/MOUSE DRIVING

Sensitivity: 100%

Enable mouse while driving

TILT DRIVING

Sensitivity: 90°

Reverse gas and brake direction

Use custom controls for this car

INPUT CALIBRATION

Steering
Pedals
Gearbox

CONTROL ASSIGNMENTS

Enter/Exit/Tow Car:	Dev 0 Button 10
Look Left/Right:	Z X
Look Up/Down:	UNASSIGNED

Animate Transition

DRIVING AIDS

Shift Aid: Auto Blip Driving Line

Auto pit speed limiter Brake Assistance

Auto visor tear off Throttle Assistance

DRIVING SCREEN

Display framerate meter Display radio info

Display driving controls Display black box

Display video timer

Done

DRIVE ▲
OPTIONS ▶
GRAPHICS ▶
REPLAY ▶
SOUND ▶
CONTROLS ▶